



DELHI PUBLIC SCHOOL BARAMULLA

SUBJECT ENRICHMENT PROGRAMME (Set-1) 2026

Class: 5th

Maximum Marks: 20

Subject: English

Name: _____

Roll No: _____

General Instructions:

- I. THE PAPER IS CLASSIFIED INTO THREE SEGMENTS (A,B,C).
- II. EACH SEGMENT CARRIES SPECIFIC WEIGHTAGE.
- III. EACH SEGMENT IS COMPULSORY.
- IV. ATTEMPT ALL QUESTIONS FROM EACH SEGMENT IN THE CORRECT ORDER.

Section A (Reading Comprehension)

Q1. Read the following passage and answer the questions that follow:

(Attempt Any Four) (1 x 4= 4 Marks)

All the villagers gathered around Mani Ram and asked him tell the truth. Mani Ram's reply left everyone except Laxman mystified. "His mice ate up my iron scales and I didn't raise a hue and cry. But when a hawk carries away his son, why does he say I lie?"

The sarpanch realized at once that there was more to the story than what Laxman had said. He spoke kindly to Mani Ram, "Mani Ram, instead of talking in riddles, why don't you tell me what happened?"

Mani Ram told the sarpanch and assembled villagers how his friend had tried to cheat him. "If mice can eat my iron scales, then why can't a hawk fly away with a boy?"

The sarpanch spoke sternly to Laxman, "Laxman, you cheated Mani Ram and stole his scales. Return them to him immediately."

"Your son is safe and sound in my house. I will bring him right away. I just wanted to teach you a lesson."

"Please forgive me, I have been greedy. I have learnt my lesson now."

- I. Mani Ram's weighing scales were made of _____.
- II. Moral of the story is _____.

- III. What is the meaning of “Mystified”?
- IV. Write synonym of “Lucky”
- V. ‘To raise a hue and cry’ means?

SECTION B (GRAMMAR)

Q2. Fill in the blanks with suitable Nouns: (Attempt Any Four) (1 x 4 =4 Marks)

- I. Only a few _____ arrived at the party on time. (person/persons)
- II. We watched a _____ of sheep grazing peacefully on the hillside. (shoal/flock)
- III. My favourite city to visit is _____, which has many historical buildings like Red Fort. (Agra/ Delhi)
- IV. The jury showed great _____ in reaching a difficult verdict. (chair/ patience)
- V. The gardener bought three new _____ for the flower beds. (bushes/ bush’s)

SECTION C (LITERATURE)

Q3. Short Answer Type Questions: (Attempt Any Four) (2 x 4 =8 Marks)

- I. Pen down moral of the story “The Mice That Ate Iron”.
- II. Name all the characters of the story “The Mice That Ate Iron”.
- III. Arrange the following words in alphabetical order
disgrace disbelief discuss discipline display
- IV. Write word meanings of:
A) beside himself with anger B) with an easy mind
- V. Why did Mani Ram take Laxman’s son with him?

Q4. Long Answer Type Questions: (4 Marks)

Analyze Mani Ram's unbelievable explanation concerning Laxman's son.

OR

Discuss the key traits that define the character Mani Ram in "The Mice That Ate Iron."

*****CONCLUDED*****



DELHI PUBLIC SCHOOL BARAMULLA

SUBJET ENRICHMENT PROGRAMME (Set-2) 2026

Class: 5th

Maximum Marks: 20

Subject: English

Name: _____

Roll No: _____

General Instructions:

- I. THE PAPER IS CLASSIFIED INTO THREE SEGMENTS (A,B,C).
- II. EACH SEGMENT CARRIES SPECIFIC WEIGHTAGE.
- III. EACH SEGMENT IS COMPULSORY.
- IV. ATTEMPT ALL QUESTIONS FROM EACH SEGMENT IN THE CORRECT ORDER.

Section A (Reading Comprehension)

Q1. Read the following passage and answer the questions that follow:

(Attempt Any Four) (1 x 4 =4 Marks)

Panda Land is a dense, misty forest in the high mountains of China. This is the home of Jing, a young and very clever giant panda. Jing's favourite food is bamboo, and he spends nearly all day chewing on the tough stalks. An adult panda eats about 40 pounds of bamboo every single day!

Jing's days follow a simple routine. He wakes up at sunrise, finds a comfortable spot on the ground, and begins his breakfast. He has soft, thick, black and white fur that keeps him warm even when the mountain air is cold. Pandas are excellent climbers, and sometimes Jing climbs high into the trees just to take a nap on a thick branch.

One afternoon, Jing was following a small, noisy river when he discovered a new patch of particularly tasty, sweet bamboo. He was so happy! Suddenly, he heard a noise—a small cub was stuck on a slippery rock in the middle of the flowing river. Jing quickly used his strong forelimbs to reach a long, sturdy vine hanging from an overhead tree. He carefully extended the vine toward the frightened cub, who grabbed it tightly. Jing pulled with all his might and rescued the cub, saving him from the dangerous current. Everyone in Panda Land realized that Jing was not only clever but also very kind.

- I. Describe Jing's appearance and favourite food.
- II. State the approximate weight of bamboo an adult panda consumes daily.
- III. Explain Jing's typical morning activity after waking up.
- IV. List two reasons why Jing's fur is important to him.
- V. Mention where Jing sometimes chooses to take his afternoon nap.

SECTION B (GRAMMAR)

Q2. Fill suitable nouns for the following sentences with the help of hint box.
(Attempt Any Four) (1 x 4 =4 Marks)

tadpole, drake, guide, puppy, honesty

- i. A baby dog is called a _____.
- ii. _____ is the best policy.
- iii. A person who shows the way is called a _____.
- iv. The male duck is called a _____.
- v. A young frog is called a _____.

SECTION C (LITERATURE)

Q3. Short Answer Type Questions: (Attempt Any Four) (2 x 4 =8 Marks)

- I. Rearrange these words in order to make meaningful sentences.
 - a. I/like/sing/a/to/song/would
 - b. lived/castle/a/giant/the/in/beautiful
- II. Explain the following lines from the poem "The Tree".

It really kept us on our toes,
A baby-tree needs care!
- III. Write word meanings of:
 - A) Tended
 - B) Paid us back
- IV. Who has written the poem "The Tree".
- V. Name the young one's of the following animals:
 - a) Kangaroo
 - b) Deer

Q4. Long Answer Type Question: (4 Marks)

Summarize the poem "The Tree".

OR

Pen down the biography of K. K. N. Daruwalla.

*****CONCLUDED*****



DELHI PUBLIC SCHOOL BARAMULLA

SUBJET ENRICHMENT PROGRAMME (Set-3) 2026

Class: 5th

Maximum Marks: 20

Subject: English

Name: _____

Roll No: _____

General Instructions:

- I. THE PAPER IS CLASSIFIED INTO THREE SEGMENTS (A,B,C).
- II. EACH SEGMENT CARRIES SPECIFIC WEIGHTAGE.
- III. EACH SEGMENT IS COMPULSORY.
- IV. ATTEMPT ALL QUESTIONS FROM EACH SEGMENT IN THE CORRECT ORDER.

Section A (Reading Comprehension)

Q1. Read the following passage and answer the questions that follow:

(Attempt Any Four) (1 x 4 =4 Marks)

The frogs in a certain swamp lived very happily without a ruler. However, one day they decided that they wanted a ruler. So they prayed to God for one. Since God realized how silly their demand was, he sent them a king who could not harm them; he tossed a big log into the middle of the pond. Hearing the splash, the frogs were terribly frightened, and dived into their holes to hide from King Log. After a while, when they saw that the king never moved, they got over their fright and went and sat on him. And as soon as they found he really could not hurt them they began to despise him. Finally they prayed to God for a new ruler. So God sent them an eel.

The frogs were pleased when Queen Eel came wriggling and swimming among them. But as the days went on, and the eel was perfectly harmless, they stopped being afraid and they stopped respecting her. So they begged for another ruler.

- I. Although the frogs had lived happily without a _____ they decided that they wanted one. (ruler/God)
- II. Since the log never moved, the frogs _____ on him. (jumped/sat)
- III. The second creature sent to them was _____. (a log/an eel)
- IV. The frogs stopped respecting Queen Eel because she _____. (was very tiny/ was harmless)
- V. When the log splashed, the frogs _____. (hid in fear/ sat on it)

SECTION B (GRAMMAR)

Q2. Write the meaning of the following words and make sentences.

(Attempt Any Four) (1 x 4 =4 Marks)

- i) behaviour
- ii) discipline
- iii) honesty
- iv) conscience
- v) lamb

SECTION C (LITERATURE)

Q3. Short Answer Type Questions:

(Attempt Any Four) (2 x 4 =8 Marks)

I. Write True or False.

a) Mani Ram had left his weighing scales with Laxman. _____

b) His weighing scales had been eaten by mice. _____

II. How did Mani Ram know that Laxman was lying about his scales?

III. Write few lines about the character "Laxman" from the story "The Mice That Ate Iron".

IV. Write word meanings of:

A) Hawk

B) Merchant

V. Identify your preferred character from "The Mice That Ate Iron" and justify your choice.

Q4. Long Answer Type Question:

(4 Marks)

Write the story "The Mice That Ate Iron" in your own words.

OR

Write few lines about the writer of the story "The Mice That Ate Iron".

*****CONCLUDED*****



DELHI PUBLIC SCHOOL BARAMULLA

SUBJECT ENRICHMENT PROGRAMME – (SET- I)

Class: 5th

Maximum Marks: 20

Subject: Mathematics

Time: 1 hour

Name : _____

Roll No: _____

General Instructions:

- i. All questions are compulsory.
- ii. Please write down the Serial Number of the question before attempting it.
- iii. The question paper consists of **07** questions and it is divided into three sections A, B and C.
- iv. **Section A** comprises of **3 questions** carrying **2 marks** each.
- v. **Section B** comprises of **3 questions** carrying **3 marks** each.
- vi. **Section C** comprises of **1 question** carrying **5 marks**.
- vii. There is no overall choice. However, an internal choice has been provided in 1 question of 5 marks. You have to attempt only one of the alternatives in that question.
- viii. Use of calculators is not permitted.

Section-A (2 marks each)

Q1. Write the expanded form of each of the following :

(i) 31,24,056

(ii) 12,12,012

Q2. Make the largest and the smallest numbers using the given digits. **1,8,2,0,2,7,5**

Q3. Write the successor of each number :

(i) 14,32,121

(ii) 1,00,00,000

Section-B (3 marks each)

Q4. In **12783425**, write the digit that is in the

(i) hundred thousand place

(ii) ten millions place

Q5. Write in columns and add :

(i) $1949760 + 1997588 + 1904320$

Q6. Multiply

(i) 2462×132

(ii) 4785×517

Section-C (5 marks each)

Q7. Divide and find the Quotient and Remainder

(i) $41262 \div 18$.

(ii) $70544 \div 27$

OR

Bharti earned ₹ 48,35,500 in a particular year. She spent ₹ 39,97,860 and saved the rest. How much money did she save ?

*****CONCLUDED*****



DELHI PUBLIC SCHOOL BARAMULLA

SUBJECT ENRICHMENT PROGRAMME – (SET- II)

Class: 5th

Maximum Marks: 20

Subject: Mathematics

Time: 1 hour

Name : _____

Roll No: _____

General Instructions:

- i. All questions are compulsory.
- ii. Please write down the Serial Number of the question before attempting it.
- iii. The question paper consists of 07 questions and it is divided into three sections A, B and C.
- iv. Section A comprises of 3 questions carrying 2 marks each.
- v. Section B comprises of 3 questions carrying 3 marks each.
- vi. Section C comprises of 1 question carrying 5 marks.
- vii. There is no overall choice. However, an internal choice has been provided in 1 question of 5 marks. You have to attempt only one of the alternatives in that question.
- viii. Use of calculators is not permitted.

Section-A (2 marks each)

Q1. Arrange the following numbers in descending order

- (i) 36451 , 36543 , 36530, 36620.
- (ii) 22341 , 33413 , 37976 , 334798 ,368050.

Q2. Find the successor of the following numbers

- (i) 2222121002
- (ii) 568942

Q3. Write the number names of the following

- (i) 98753
- (ii) 100098

Section-B (3 marks each)

Q4. write in columns and add

(i) $123683 + 937957$

(ii) $63827282 + 7902769$

Q5. Multiply the following

(i) 2462×132

(ii) 6009×428

Q6. Divide and find the Quotient and Remainder , if any

(i) $41262 \div 18$

(ii) $234587 \div 45$

Section-C (5 marks)

Q7. What is the product of the largest 4-digit number and the largest 2-digit number?

OR

A class of 26 students went on a trip. The School spent ₹28,924 on the trip in all. How much did the School ask each student to contribute if the School contributed ₹ 5,784 ?

*******CONCLUDED*******



DELHI PUBLIC SCHOOL BARAMULLA

SUBJECT ENRICHMENT PROGRAMME – (SET- III)

Class: 5th

Maximum Marks: 20

Subject: Mathematics

Time: 1 hour

Name : _____

Roll No: _____

General Instructions:

- i. All questions are compulsory.
- ii. Please write down the Serial Number of the question before attempting it.
- iii. The question paper consists of 07 questions and it is divided into three sections A, B and C.
- iv. Section A comprises of 3 questions carrying 2 marks each.
- v. Section B comprises of 3 questions carrying 3 marks each.
- vi. Section C comprises of 1 question carrying 5 marks.
- vii. There is no overall choice. However, an internal choice has been provided in 1 question of 5 marks. You have to attempt only one of the alternatives in that question.
- viii. Use of calculators is not permitted.

Section-A (2 marks each)

Q1. Write the numbers. Mark the periods with commas.

- (i) Seven lakh twenty two thousand one hundred forty two.
- (ii) Two crore sixty-eight thousand nine hundred eighty six.

Q2. Compare each pair of numbers. Put $>$, $<$, $=$

- (i) 3,542,478 _____ 35,42,748.
- (ii) 2,70,890 _____ 270,890

Q3. Write in columns and subtract

- (i) 1098753 - 43686
- (ii) 43765 - 34266

Section-B (3 marks each)

Q4. Bharti earned ₹ 48,35,500 in a particular year. She spent ₹ 39,97,860 and saved the rest. How much money did she save?

Q5. The product of two numbers is 1,39,298. If one of them is 289, find the other?

Q6. Find the product

(i) 101×900

(ii) 548×600

Section-C (5 marks)

Q7. Find the Quotient and Remainder of

(i) $234587 \div 45$

(ii) $5032907 \div 385$

(iii) $5602010 \div 545$

OR

Twenty people can eat 200 apples .How many apples are required for 79 such people?

*******CONCLUDED*******



DELHI PUBLIC SCHOOL BARAMULLA

Subject Enrichment Program

SET :1

Class: 5th

Maximum Marks: 20

Subject: Social Science

Time. _____

Name _____

Roll No: _____

General Instructions:

General Instructions:

Read the following instructions very carefully and strictly follow them.

This paper comprises of four sections A, B C and D. This set carries 10 Questions. All questions are compulsory.

Section A – Questions no. 1 to 5 are short answer type questions of 1 mark each.

Section B – Questions no. 6 and 7 are short answer type questions, carrying 2 marks each.

Section C – Questions no8 and 9 are long answer type questions, carrying 3 marks each. Answer to each question should not exceed 80 words.

Section D- Question no. 10 is map based carrying 5 marks.

Tick (✓) the correct answers.

1.The explorer who sailed around the world was

a. Vasco da Gama b.Gerardus Mercator

c. Christo Columbus d.Ferdinand Magellan

2. The ratio between the distance on a map and the actual distance on the ground is called

a. Direction b. Sphere

c. Scale d.Symbol

3.The symbol used to show a city on a map is a

A.Dash b.Triangle

c. Small circle d.Rectangle

Write T for true or F for False

4. Forests and industries cannot be shown on a map. _____

5. Plains and mountains are shown in different colours. ____

Give short answers for the following questions.

6. Describe the four major directions.

7. We cannot always use a globe to study the Earth. Why?

Give long answers for the following questions.

8. What are the features that help us to read a map? Explain.

9. How do maps help us? Why is a map less accurate than a globe.

10. On the political map of the world, locate and label the following deserts by marking the countries in which they are found:

A) Sahara Desert – (Africa: Algeria/Libya/Egypt/Chad/Sudan)

b) Arabian Desert – (Saudi Arabia)

c) Gobi Desert – (China & Mongolia)

d) Great Victoria Desert – (Australia)

e) Atacama Desert – (Chile)



*****CONCLUDED*****



DELHI PUBLIC SCHOOL BARAMULLA

Set-2

Class:5th

Maximum Marks: 20

Subject: SST

Name _____

General Instructions:

General Instructions:

Read the following instructions very carefully and strictly follow them.

This paper comprises four sections A, B C and D. This set carries 10 Questions. All questions are compulsory.

Section A – Questions no. 1 to 5 are short answer type questions of 1 mark each.

Section B – Questions no. 6 and 7 are short answer type questions, carrying 2 marks each.

Section C – Questions no8 and 9 are long answer type questions, carrying 3 marks each. Answer to each question should not exceed 80 words.

Section D- Question no. 10 is map based question carrying 5 marks

Fill in the blank

1.The two end points of the Earth's axis are called

a.Dots.

b.Lines.

c.poles.

d.Caps

2.The part of the Earth above the Equator is called the

a.North pole b.Southern Hemisphere

c.South Pole. d.Northern Hemisphere

3.The prime meridian passes through a place called

a. Sandwich. b.Greenwich c.Norwich.

d.London

Fill in the blanks

4.The Equator is the longest _____

5.Greenwich is a place near _____

Give short answers for the following questions.

6. What is a parallel? Write three features of parallel.

7. How do we number parallels on a globe?

Give long answers for the following questions.

8. Write five sentences about meridians.

9. What is a meridian? Write three features of Meridians.

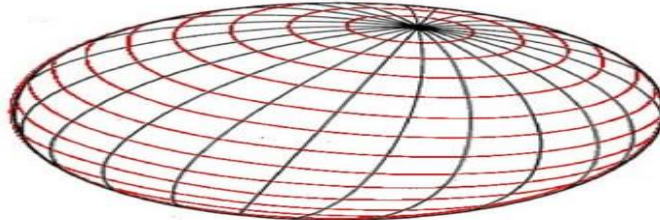
10. **Identify & Label**

1. **Label the North Pole, South Pole, Equator, Tropic of Cancer, Tropic of Capricorn.**

2. **Mark and label the Prime Meridian on the globe.**

3. **Mark a point on the Globe that lies on 90°E longitude.**

MERIDIANS AND PARALLELS



A series of imaginary vertical and horizontal lines enables us to identify the exact location of places on Earth.

*****CONCLUDED*****



DELHI PUBLIC SCHOOL BARAMULLA

Set-3

Class:5th

Maximum Marks: 20

Subject: SST

Name _____

General Instructions:

General Instructions:

Read the following instructions very carefully and strictly follow them.

This paper comprises four sections A, B C and D. This set carries 10 Questions. All questions are compulsory.

Section A – Questions no. 1 to 5 are short answer type questions of 1 mark each.

Section B – Questions no. 6 and 7 are short answer type questions, carrying 2 marks each.

Section C – Questions no8 and 9 are long answer type questions, carrying 3 marks each. Answer to each question should not exceed 80 words.

Section D- Question no. 10 is map based question carrying 5 marks

Fill in the blanks

1.The large water bodies on the Earth are called

a.Lakes.

b.Oceans.

c.Continents

2.The first person who published a collection of maps was

a.Copernicus.

b.Magellan.

c.Mercator

3.This has steep slopes and a conical peak

a. Mountains.

b.Plains.

c.Plateaus

Fill in the blanks

4.The east -West lines drawn on a globe are called

5. All parallels are of the same _____

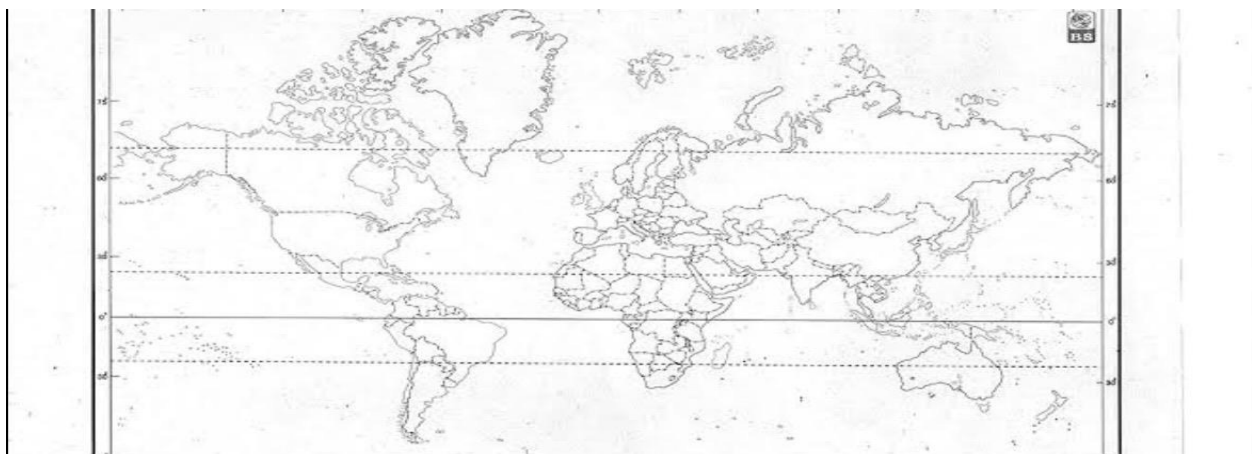
Give short answers for the following questions.

6. Name the three important parallels.
7. What type of lines run from north to south?

Give long answers for the following questions.

8. The length of a parallel increases as we move away from the poles towards the equator. Why?
9. The earth looks mostly blue when seen from space. Why?
10. **Observe the outline political map of the world given below. On the map:**

1. **Mark and label the Equator (0° latitude).**
2. **Mark and label the Tropic of Cancer ($23\frac{1}{2}^{\circ}$ N).**
3. **Mark and label the Tropic of Capricorn ($23\frac{1}{2}^{\circ}$ S).**
4. **Shade the area between Tropic of Cancer and Tropic of Capricorn (the Torrid Zone).**
5. **Write the names of any two countries through which the Equator passes**



*****CONCLUDED*****



دہلی پبلک اسکول بارہمولہ
موضوع کی افزودگی کی سرگرمی (۲۶-۲۰۲۵)

Set:-1

مضمون : اردو جماعت : پانچویں :

رول نمبر ----- نمبرات :- ۲۰

ضروری ہدایات - اس سرگرمی میں صفحات کی کل تعداد ۲ ہے۔ اس سرگرمی کو حصہ اورب میں بانٹ دیا گیا ہے۔ نوٹ : اس سرگرمی کو علیحدہ نوٹ بک پر حل کریں۔

حصہ الف

سوال نمبر 1: درج ذیل تدریسی شاعری بند کو پڑھ کر نیچے پوچھے گئے سوالات کے جوابات لکھیے۔ (۵)

خدایا ملے علم کی روشنی

منور ہو اس سے میری زندگی

چلوں نیک رستے پہ میں عمر بھر

ہو سچی کمائی پہ میری گرز (کرشن پرویز)

۱:- نظم دعا میں شاعر اللہ سے کس چیز کی دعا مانگتا ہے؟

۲:- شاعر کس کمائی پہ گزارہ کرنا چاہتا ہے؟

۳:- نظم میں ڈھونڈ کر نیک کا ضد لکھیے؟

۴:- منور کا مترادف الفاظ ہے۔ (آسمان ، روشن)۔

۵:- یہ نظم کس شاعر نے لکھی ہے؟

سوال نمبر 2: درج ذیل (غیر تدریسی) نثری عبارت کو غور سے پڑھ کر نیچے پوچھے گئے سوالات کے جوابات لکھئے۔ (۵)

مدرٹیرسہ کا اصلی نام آگن تھا۔ آپ (۲۶) اگست (۱۹۱۰) عیسوی یوگوسلاویہ کے ایک شہر جسے اب مقدمہ کہتے ہیں۔ وہ ایک غریب گھرانے میں پیدا ہوئے۔

۱۔ مدرٹیرسہ کا اصلی نام کیا تھا؟

۲۔ مدرٹیرسہ کب پیدا ہوئی؟

۳۔ آپ کس شہر میں پیدا ہوئے؟

۴۔ مدرٹیرسہ کس گھرانے میں پیدا ہوئے؟

۵۔ امیر کا ضد لکھیے؟

(حصہ ب)

سوال نمبر 3:- تفصیل سے جوابات لکھیے۔ $۲ \times ۲ = ۴$

۱:- نظم (دعا) میں شاعر کس چیز کی توفیق اللہ سے چاہتا ہے؟ (۲)

۲:- نظم (دعا) کا خلاصہ اختصاراً بیان کیجئے۔؟ (۲)

سوال نمبر 4:- مختصراً جوابات لکھیے۔ $(۲ \times ۱ = ۲)$

۴:- (دعا) کے آخری شعر میں شاعر نے کس چیز کی تناک کی ہے؟ (۱)

۵:- نظم دعا میں پیر اللہ سے کس چیز کی دعا مانگتا ہے؟ (۱)

(حصہ ج)

سوال نمبر 5:- الفاظ کو جملوں میں استعمال کیجئے۔ (۲)

۱۔ منور۔ ۲۔ مھلائی

سوال نمبر 6:- املا درست کیجئے۔ (۲)

قماہی ، بول ، فرز ، نین

❖ ختم شد



دہلی پبلک اسکول بارہمولہ

سرمائی تفویض سٹ 3 نمبرات: ۲۰

جماعت: پانچویں

رول نمبر: نام:

ضروری ہدایات

آپ جانچ لیجیے کہ اس سرگرمی میں چھپے صفحات کی تعداد ۴ ہے۔

اس سرگرمی کو حصہ اب ج میں بانٹ دیا گیا ہے۔

اس سرگرمی میں سوالات کی کل تعداد ۷ ہے۔

حصہ (الف)

سوال نمبر 1: سوالات کے جوابات تحریر کیجئے۔ (۳×۲)

۱۔ مچ میں ٹاس کس ٹیم نے جیتا؟

۲۔ نیٹ بریکس کے دوران کس نے لڑکیوں کا حوصلہ بڑھایا؟

۳۔ آخر پر مچ کس ٹیم نے جیتا؟

سوال نمبر 2: پانچ مختصر جملوں میں کرکٹ پر اپنی رائے دیجئے۔ (۵)

سوال نمبر 3: اپنے پرنسپل صاحب کے نام ایک درخواست لکھیے جس میں ایک کرکٹ میچ کھیلنے کی اجازت طلب کی گئی ہو۔ (۵)

سوال نمبر 4: واحد الفاظ کے جمع لکھیے لکھیے۔ (صرف دو کے) (۲)

۱۔ لڑکی

۲۔ چوکا

۳۔ مقابلہ

۴۔ گیند

سوال نمبر 5: الفاظ کے اضداد لکھیے؟ (۲)

جیت

غم

دکھ

غلام

ختم شد۔



دہلی پبلک اسکول دلنہ بارہمولہ

پرچہ برائے جماعت پانچویں (۲۰۲۵-۲۰۲۶)

set2 سرمائی تفویض

مضمون: اردو نام ----- نمبرات: ۲۰

رول نمبر -----

ضروری ہدایات

آپ جانچ لیجیے کہ اس پرچہ میں چھپے صفحات کی تعداد ۲ ہے۔۔

اس پرچہ میں سوالات کی کل تعداد ۵ ہے

سوال نمبر 1: درج ذیل پوچھے گئے سوالات کے تفصیلاً "جوابات لکھیے۔ ۳×۲

۱- سوداگر کو کون سی سزا کس بات پر ملی؟

۲- خزانے کے تمام اونٹ حاصل کرنے کے بعد سوداگر کو کس بات خیال آیا؟

۳- اس کہانی (لاچ کی سزا) سے ہمیں کیا نصیحت ملتی ہے؟

سوال نمبر 2: درج ذیل پوچھے گئے سوالات کے مختصر طور پر جوابات لکھی ۳×۱

۱۔ فقیر کو جنگل میں کیا ملا؟

۲۔ فقیر نے خزانہ دیکھ کر کیوں چھوڑ دیا؟

سوال نمبر ۳۔ غلط جملوں کے آگے (×) اور صحیح جملوں کے آگے (√) کا نشان لگائیے، - ۶×۱

۱۔ لالچ کرنے سے بہت سے فائدہ ہوتا ہے -

۲۔ لالچ ہوس اور حسد بری عادتیں ہیں

۳۔ لالچ بری بلا ہے -

۴۔ جو نفس پر قابو پائے وہ ناکام ہے -

سوال نمبر ۴۔ ۴۔ دیے گئے الفاظ کی ضد لکھیے۔ - ۴×۱

۱۔ روشنی

۲۔ بار

۳۔ بھلائی

۴۔ چھوٹا

سوال نمبر ۵۔ الفاظ کے معنی لکھیے۔ صرف دو کے۔ - ۱×۱

۱۔ فقیر

۲۔ جھٹ

۳۔ واسطہ

۴۔ پھولے نہ سمانا



DELHI PUBLIC SCHOOL BARAMULLA
SUBJECT ENRICHMENT PROGRAMME
SET-1 (2025 -26)

विषय : -हिंदी

अनुक्रमांक :

कक्षा 5TH :-

अधिकतम अंक

: 20

सामान्य निर्देश:-

- इस प्रश्नपत्र- में तीन खंड हैं खंड 'क', 'ख' और 'ग'। प्रश्न पत्र में कुल प्रश्नों की संख्या 7 है।
- खंड 'क' में कुल एक अपठित गद्यांश है। गद्यांश पर आधारित 5 वर्णनात्मक प्रश्न दिए गए हैं।
- खंड 'ख' में व्यावहारिक व्याकरण पर आधारित 3 प्रश्न पूछे गए हैं। सभी प्रश्नों के उत्तर ध्यान से लिखें।
- खंड 'ग' में रचनात्मक लेखन पर आधारित 3 प्रश्न पूछे गए हैं। प्रश्नों में आंतरिक विकल्प भी दिए गए हैं। प्रश्नों के उत्तर दिए गए निर्देशों का पालन करते हुए लिखिए।
- कार्य में स्वच्छता का विशेष ध्यान रखें और सभी प्रश्नों को ध्यानपूर्वक पढ़ें।

खंड 'क' (अपठित बोध)

प्रश्न 1. निम्नलिखित गद्यांश को पढ़कर पूछे गए बहुविकल्पी प्रश्नों के

उत्तर लिखिए।

(5×1=5)

रवि एक होशियार और मेहनती छात्र है। वह रोज़ समय पर स्कूल जाता है और घर आकर अपना काम करता। उसे विज्ञान का विषय बहुत पसंद है। स्कूल में जब विज्ञान की प्रयोगशाला खुली तो रवि सबसे पहले वहां पहुंचा। उसने शिक्षक ने उसकी जिज्ञासा और लगन की प्रशंसा की। रवि का सपना है कि वह बड़ा होकर वैज्ञानिक बने।

(i) रवि कैसा छात्र है।

(क) आलसी

(ख) होशियार और मेहनती

(ग) शरारती

(ii) रवि को कौन सा विषय पसंद है।

- (क) हिंदी
(ख) गणित
(ग) विज्ञान
- (iii) प्रयोगशाला खुलने पर रवि ने क्या किया।
(क) घर चला गया ।
(ख) सबसे पहले प्रयोगशाला पहुंचा ।
(ग) मैदान में खेलने गया।
- (iv) बड़ा होकर रवि क्या बनना चाहता था।
(क) डॉक्टर
(ख) वैज्ञानिक
(ग) शिक्षक
- (v) रवि ने माइक्रोस्कोप में क्या देखा ।
(क) फूल की खुशबू
(ख) पत्ते की बनावट
(ग) पानी का रंग

खंड - ख (व्याकरण)

प्रश्न.2 सही संज्ञा का चयन किजिए। $1 \times 3 = 3$)

- (क) _____ भारत की राजधानी है। (दिल्ली/नदी)
(ख) पेड़ पर रंग- बिरंगे _____ लगे हैं। (फूल/ पानी)
(ग) खेत में किसान _____ बो रहा है। (बीज/ खुशी)

प्रश्न.3 नीचे दिए गए संज्ञा शब्दों से अर्थपूर्ण वाक्य बनाईए।

($1 \times 3 = 3$)

(क) विधालय:-

(ख) बच्चा:-

(ग) पानी:-

खंड - ग (लेखन)

प्रश्न. 5 'किसी एक विषय पर निबंध लिखिए। ($5 \times 1 = 5$)

मेरी मां

अथवा

समय का महत्व

प्रश्न6: अवकाश के लिए प्रार्थना पत्र । (4×1=4)

अथवा

मित्र को जन्मदिन की शुभकामनाएं देते हुए पत्र ।

..... समाप्त.....



DELHI PUBLIC SCHOOL BARAMULLA
SUBJECT ENRICHMENT PROGRAMME
SET-2 (2025 -26)

विषय : -हिंदी

अनुक्रमांक :

कक्षा पांचवीं :-

अधिकतम

अंक : 20

सामान्य निर्देश:-

- इस प्रश्नपत्र- में तीन खंड हैं खंड 'क', 'ख' और 'ग'। प्रश्न पत्र में कुल प्रश्नों की संख्या 7 है।
- खंड 'क' में कुल एक अपठित गद्यांश है। गद्यांश पर आधारित 5 वर्णनात्मक प्रश्न दिए गए हैं।
- खंड 'ख' में व्यावहारिक व्याकरण पर आधारित 3 प्रश्न पूछे गए हैं। सभी प्रश्नों के उत्तर ध्यान से लिखें।
- खंड 'ग' में रचनात्मक लेखन पर आधारित 3 प्रश्न पूछे गए हैं। प्रश्नों में आंतरिक विकल्प भी दिए गए हैं। प्रश्नों के उत्तर दिए गए निर्देशों का पालन करते हुए लिखिए।
- कार्य में स्वच्छता का विशेष ध्यान रखें और सभी प्रश्नों को ध्यानपूर्वक पढ़ें।

खंड 'क' (अपठित बोध)

प्रश्न 1. निम्नलिखित गद्यांश को पढ़कर पूछे गए प्रश्नों के उत्तर लिखिए :-

(1×5=5)

चिड़ियाघर में कई तरह के जानवर होते हैं। बच्चे वहां जाकर शेर, हाथी, बंदर, और हिरन देखकर बहुत खुश होते हैं। चिड़ियाघर में जानवरों की देखभाल के लिए कर्मचारी होते हैं जो इन्हें समय पर भोजन और पानी देते हैं।

(क) बच्चे चिड़ियाघर में जाकर क्यों खुश होते हैं?

(ख) जानवरों की देखभाल कौन करता है?

(ग) चिड़ियाघर में कौन-कौन से जानवर होते हैं?

खंड - ख (व्याकरण)

प्रश्न.2 दिए गए शब्दों के वचन बदलिए।(1×3=3)

औरत, मिठाई, रस्सी, लड़की, किताब, लकड़ी।

प्रश्न.3 संज्ञा की परिभाषा उदाहरण सहित लिखिए।(1×3=3)

खंड - ग (लेखन)

प्रश्न. 5 किसी एक विषय पर निबंध लिखिए । (5×1=5)

मेरा देश

अथवा

विज्ञान के चमत्कार

प्रश्न6: अवकाश के लिए प्रधानाचार्य को प्रार्थना पत्र।

अथवा (1×4=4)

पुस्तक भेजने के लिए धन्यवाद पत्र

..... समाप्त.....



DELHI PUBLIC SCHOOL BARAMULLA
SUBJECT ENRICHMENT PROGRAMME
SET-3(2025 -26)

विषय : -हिंदी

अनुक्रमांक :

कक्षा पांचवीं :-

अधिकतम

अंक : 20

सामान्य निर्देश:-

- इस प्रश्नपत्र- में तीन खंड हैं खंड 'क', 'ख' और 'ग'। प्रश्न पत्र में कुल प्रश्नों की संख्या 7 है।
- खंड 'क' में कुल एक अपठित गद्यांश है। गद्यांश पर आधारित 5 वर्णनात्मक प्रश्न दिए गए हैं।
- खंड 'ख' में व्यावहारिक व्याकरण पर आधारित 3 प्रश्न पूछे गए हैं। सभी प्रश्नों के उत्तर ध्यान से लिखें।
- खंड 'ग' में रचनात्मक लेखन पर आधारित 3 प्रश्न पूछे गए हैं। प्रश्नों में आंतरिक विकल्प भी दिए गए हैं। प्रश्नों के उत्तर दिए गए निर्देशों का पालन करते हुए लिखिए।
- कार्य में स्वच्छता का विशेष ध्यान रखें और सभी प्रश्नों को ध्यानपूर्वक पढ़ें।

खंड 'क' (अपठित बोध)

प्रश्न 1. निम्नलिखित गद्यांश को पढ़कर पूछे गए प्रश्नों के उत्तर लिखिए :-

(5×1=5)

रिया हर सुबह जल्दी उठती है। वह उठकर सबसे पहले अपने पौधों को पानी देती है। उसके गमलों में गुलाब , तुलसी, और गेंदे के पौधे लगे हैं। रिया को फूल बहुत पसंद हैं, इस लिए वह उनकी अच्छी देखभाल करती है।

(क) रिया सुबह उठकर सबसे पहले क्या करती है?

(ख) रिया के गमलों में कौन-कौन से फूल लगे हैं?

(ग) रिया को क्या बहुत पसंद है?

(घ) रिया पौधों की जांच कैसे करती है?

(ङ) रिया का क्या मानना है?

खंड - ख (व्याकरण)

प्रश्न.2 पर्यायवाची शब्द क परिभाषा उदाहरण सहित लिखिए। (1×3=3)

प्रश्न.3 वचन किसे कहते हैं? वचन के कितने भेद हैं?(1×3=3)

खंड - ग (लेखन)

प्रश्न.4:किसी एक विषय पर निबंध लिखिए । (5×1=5)

मेरा प्रिय खेल

अथवा

मेरा प्रिय मित्र

प्रश्न5: प्रधानाचार्य को अनुशासन बनाए रखने का अनुरोध।

अथवा

स्कूल में नई पुस्तकें उपलब्ध करवाने का अनुरोध। (4×1=4)

..... समाप्त.....



DELHI PUBLIC SCHOOL, BARAMULLA

SEP (SET 1)

CLASS: V

SUBJECT: Science.

TIME: 01 HOUR

MAX. MARKS: 20

NAME: _____

ROLL NO. : _____

GENERAL INSTRUCTIONS:

1. The question paper is divided into three sections- A,B and C
2. The weightage of each section is as follows:
 - Section A comprises of 2 questions of 1 mark each.
 - Section B comprises of 3 questions of 2 marks each.
 - Section C comprises of 1 question of 4 marks.
3. The students must read all the questions carefully before answering.

SECTION – A

Q1. Multiple choice questions. (6 Marks)

- i. A seed with two seed leaves is called a _____.
 - a. monocot.
 - b. dicot seed
 - c. soaked seed.
- ii. Right soil, warmth, enough air and water are necessary conditions for the growth of _____.
 - a. seeds
 - b. books
 - c. birds
- iii. New plants can grow from the leaves of _____.
 - a. ginger.
 - b. onion
 - c. bryophyllum
- iv. Which feature helps a coconut fruit to float in water?
 - a. a spongy part
 - b. presence of hook
 - c. a fibrous outer covering
- v. Plants that grow well in clayey soil are _____.
 - a. rice and jute
 - b. Jowar and bajra
 - c. tea and coffee
- vi. Pesticides protect crops from being destroyed by _____.
 - a. drought
 - b. pests
 - c. elephants

Q2. Circle the correct answers. (4 Marks)

- i. Seeds of (gram / pea / maize) are monocot seeds.
- ii. The development of a seed into a seedling is called (dispersal / budding / germination).
- iii. Seeds of cotton are dispersed by (water / wind / explosion).
- iv. Some plants like rose grow from (root / leaf / stem) cuttings.

SECTION – B

Short answer type (6 Marks)

Q3. Why do animals need to take in oxygen?

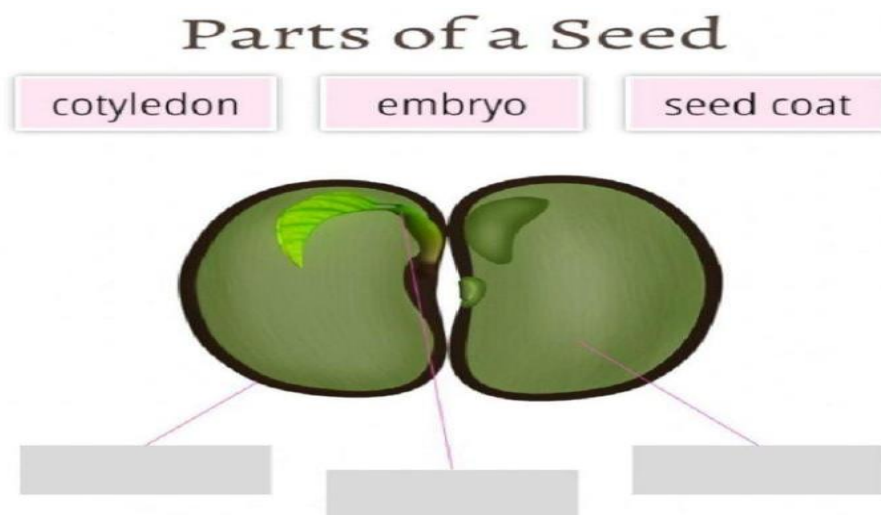
Q4. Why do animals need to move?

Q5. How do insects move?

SECTION – C

Long answer type (4 Marks)

Q5. What is germination. Label the parts shown in the seed diagram.



OR

Draw two birds that can fly?

*******CONCLUDED*******



DELHI PUBLIC SCHOOL, BARAMULLA

SEP (SET 2)

CLASS: V

SUBJECT: Science.

TIME: 01 HOUR

MAX. MARKS: 20

NAME: _____

ROLL NO. : _____

GENERAL INSTRUCTIONS:

1. The question paper is divided into three sections- A,B and C
2. The weightage of each section is as follows:
 - Section A comprises of 2 questions of 1 mark each.
 - Section B comprises of 3 questions of 2 marks each.
 - Section C comprises of 1 question of 4 marks.
3. The students must read all the questions carefully before answering.

SECTION – A

Q1. Multiple choice questions. (6 Marks)

- i. A frog is an amphibian because it can live
 - a. only land
 - b. only water
 - c. on land and in water
- ii. Whales and dolphins are classified as _____.
 - a. fish
 - b. mammals
 - c. reptiles
- iii. This animal has scales on its body.
 - a. fish
 - b. deer
 - c. zebra
- iv. This bird cannot fly.
 - a. ostrich
 - b. zebra
 - c. a duck
- v. Locusts are harmful migratory
 - a. birds
 - b. insects
 - c. rodents
- vi. _____ use four paddle-like limbs to push water back and to swim.
 - a. turtle
 - b. penguin
 - c. frog

Q2. Change the underlined words to make correct statements. (4 Marks)

- i. Animals get their supply of oxygen from food.
- ii. The blood of an insect does not contain the carbon dioxide carrier called haemoglobin.
- iii. The mass movement of animals from one place to another is known as hibernation.
- iv. Gills are special organs with which all mammals breathe.

SECTION – B

Short answer type (6 Marks)

Q3. Name the conditions necessary for germination.

Q4. What is meant by dispersal of seeds?

Q5. Why do some animals migrate?

SECTION – C

Long answer type (4 Marks)

Q5. Fill in the table to show which conditions are needed for seed germination based on the plates given below.

Conditions the seed got	Conditions the seed didn't get	Did the seeds germinate
Plate 1 Air, Warmth (Sunlight)	Moisture, (Water)	No,
Plate 2 Moisture (Water), Warmth		
Plate 3 Air, Moisture		
Plate 4 Air, Moisture, Warmth		

OR

A bird and a bat can fly, yet they are different from each other. How?

*******CONCLUDED*******



DELHI PUBLIC SCHOOL, BARAMULLA

SEP (SET 3)

CLASS: V

SUBJECT: Science.

TIME: 01 HOUR

MAX. MARKS: 20

NAME: _____

ROLL NO. : _____

GENERAL INSTRUCTIONS:

1. The question paper is divided into three sections- A,B and C
2. The weightage of each section is as follows:
 - Section A comprises of 2 questions of 1 mark each.
 - Section B comprises of 3 questions of 2 marks each.
 - Section C comprises of 1 question of 4 marks.
3. The students must read all the questions carefully before answering.

SECTION – A

Q1. Multiple choice questions. (6 Marks)

- i. _____ breathes through its body surface.
 - a. amoeba
 - b. whale
 - c. dolphin
- ii. A baby frog or a tadpole breathes through _____.
 - a. Air tubes
 - b. body surfaces
 - c. gills
- iii. _____ breathe through lungs.
 - a. crabs
 - b. birds
 - c. prawns
- iv. Most mammals have _____.
 - a. two limbs
 - b. four limbs
 - c. six limbs
- v. Which plant part contains the seed?
 - a. leaf
 - b. flower
 - c. stem
- vi. Seeds of which plant are dispersed by wind?
 - a. pea
 - b. coconut
 - c. dandelion

Q2. Fill in the blanks. (4 Marks)

- i. Maize has _____ seed leaf / leaves.
- ii. Any part of a potato that has _____ on it can grow into a new plant.
- iii. In India, crops like wheat and gram are grown from November to April, and are called _____ crops.
- iv. Onion and _____ need well-drained, sandy soil.

SECTION – B

Short answer type (6 Marks)

Q3. What is Haemoglobin?

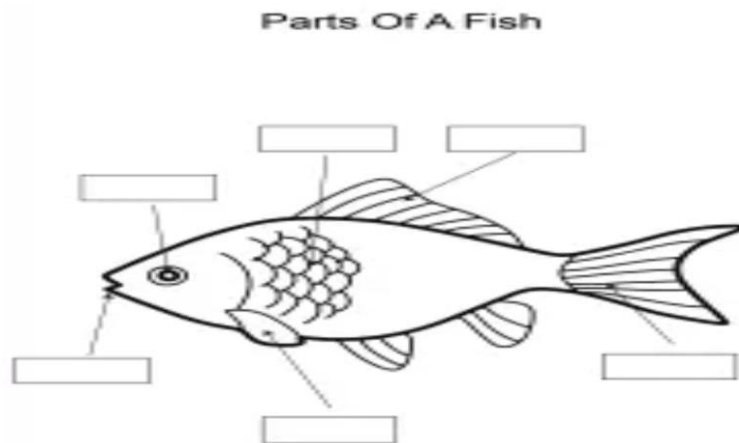
Q4. What are Kharif crops?

Q5. How are plants useful to us?

SECTION – C

Long answer type (4 Marks)

Q5. What special features help water animals move? Label the diagram given below.



OR

Name a few animals found around you. Write one characteristic feature of each.

*******CONCLUDED*******