



**DUBAI GRAND
INTERNATIONAL SCHOOL**
SUCCESS IN BOTH WORLDS

*Model
Test
Paper*

*Grade VII
Session: 2023-24*



English

Max. Marks: 40

Section A: READING

Q1. Read the passage given below and answer the questions that follow:

When they entered, a strange thing happened. The bedclothes gathered themselves and leapt into the air.

It was almost as though a hand had clutched them and flung them aside.

The couple turned pale with fright when the stranger's hat hopped off the bedpost and whirled in the air before crashing into Mrs Hall's face.

The sponge left the washstand, the chair flung the stranger's coat and trousers. Mr and Mrs Hall ran around screaming.

a. What is the name of the chapter from which this passage has been taken?

Ans: _____

b. When they entered, what strange thing happened?

Ans: _____

c. Why did the couple turn pale?

Ans: _____

d. Where did the chair flung?

Ans: _____

e. Name all the characters in the story.



Ans: _____

(1×5=5)

Q2. Read the versus given below and answer the questions that follow.

*All the world's a stage,
And all the men and women merely players
They have their exits and their entrances,
And one man in his time plays many parts,
His acts being seven ages. At first, the infant,
Mewling and picking in the nurse's arms.
Then the whining schoolboy, with his satchel
And shining morning face, creeping like a snail
Unwilling to school. And then the lover,
Sighing like furnace, with a woeful ballad
Made to his mistress' eyebrow. Then a soldier,
Full of strange oaths and bearded like the pard,
Jealous in honour, sudden and quick in quarrel,
Seeking the bubble reputation*

a. What is the name of the poem from which the above verses have been taken?

Ans: _____

b. How many stages does a man have in his life according to the poet?

Ans: _____

c. Describe the phase from infancy to school boy?

Ans: _____

d. What does the lover do for her beloved?



Ans: _____

e. What is the meaning of the word 'pard'?

Ans: _____

(1×5=5)

Q3. Savvy the picture and complete the following paraphrase using appropriate words:



Even in the _____ mouth. And then the _____,
 In fair _____ belly with good _____ lined,
 With eyes _____ and _____ of formal cut,
 Full of wise _____ and _____ instances;
 And so he _____ his part. The _____ age shifts



Q5. Carve out your views on 'Shillong as the rock capital of India'. (Essay writing in 150-200 words) (3 marks)

Note: You can use assignment as reference.

Ans: _____

Section C: Literature

Q6. Answer the following questions.

a. What was Mrs Hall's reaction on seeing the stranger's clothes and bandages lying scattered?

Ans: _____

b. What is a science fiction?

Ans: _____



c. Why does the schoolboy walk at snail's pace? Is he not happy?

Ans: _____

d. How does a man play his part as 'the justice'?

Ans: _____

e. Who was the young man who lay still on the grass? Why did everyone look serious when he was raised?

Ans: _____

f. Write a short note on Soulmate?

Ans: _____

g. Who is the author of the play 'To Be A Lady'?

Ans: _____



Section D: Grammar

Q7. Fill in the blanks with appropriate preposition.

- a. This shop doesn't have the toys I was looking _____ . (up/for)
- b. The teacher divided the sweets _____ all the children. (between/among)
- c. Bruce did not fare well _____ his examination. (in/at)
- d. The dog is grateful _____ its owner. (to/for)
- e. My brother's anniversary is _____ 5th November. (on/in)
- f. The boy _____ the store is quite young. (at/on)
- g. Mahatma Gandhi was born _____ 2nd October. (on/in)
- h. Rupert is fond _____ muffins. (of/off)
- i. The dog jumped _____ the sofa. (on/in)
- j. Humpty Dumpty sat _____ a wall. (on/at)

(0.5×10=5)

Q8. Give the meanings of the following idioms and use them in your own sentences.

a. By the skin of your teeth

b. See eye to eye

c. The ball is in your court

d. Sat on the fence

e. Beat around the bush



f. Best thing since sliced bread

(0.5×6=3)

Q9. Fill in the blanks with appropriate pronouns.

- a. Amit and Sumit are twin brothers. _____ take the same bag to school.
- b. Milly and I are very good friends. _____ have known each other since childhood.
- c. The mangoes are very sour. Where did you buy _____?
- d. I love watching Tom and Jerry. _____ reminds me of my childhood days.
- e. I bought this book for my sister. _____ often read it together.
- f. There are many windows here. But all of _____ are jammed.
- g. The army has reached _____ destination.

(1×7=7)



Mathematics

Section A

(10 marks)

Q1. Multiple choice questions.

- The average of 1, 2, 3, 4, 5, 6, 7, 8, 9 is
 - 24
 - 35
 - 40
 - 45
- What is the mode of 1, 2, 3, 4, 2, 56, 67, 2, 2, 2
 - 2
 - 3
 - 5
 - 1
- What is the perimeter of a rectangle with a length of 12 cm and a width of 8 cm?
 - 16 cm
 - 20 cm
 - 40 cm
 - 56 cm
- If the base of a triangle is 5 units and the height is 8 units, what is the area of the triangle?
 - 13 sq units
 - 20 sq units
 - 26 sq units
 - 40 sq units
- What does the term "mode" represent in a set of data?
 - The middle value
 - The most frequently occurring value
 - The average value
 - The range of values
- If a set of data is {6, 8, 8, 10, 12}, what is the median?
 - 8
 - 9
 - 10
 - 12

Q2. Fill in the blanks.

- The _____ of a rectangle is calculated by adding the lengths of all its sides.
- In a bar graph, each bar represents a specific _____ or category.



3. Area of the circle is given by the formula _____.
4. The perimeter of a square with side 10 cm is _____.

Q3. True/ False.

1. The area of a triangle is calculated by multiplying its base and height and then dividing by 2.
2. In a line graph representing the temperature over a week, the x-axis typically represents the days of the week.
3. The diameter of a circle is 4 times its radius.
4. Area of a parallelogram is 4 (base X height).

Section B (Do any 5)

(10 marks)

Q4. Reasoning and assertion.

Instructions:

- Read each assertion and reasoning carefully.
- Evaluate whether the reasoning provides a valid explanation for the assertion.
- Choose the correct option based on your evaluation.

Assertion: The perimeter of a square is always greater than its area.

Reasoning: Perimeter is the sum of all sides, while the area involves multiplication of length and width. The addition of sides in the perimeter calculation makes it generally larger than the product in the area calculation.

- a. Both the assertion and reasoning are true, and the reasoning is a valid explanation of the assertion.
- b. Both the assertion and reasoning are true, but the reasoning is not a valid explanation of the assertion.
- c. The assertion is true, but the reasoning is false.
- d. Both the assertion and reasoning are false.

Q5. Assertion: In a pie chart representing the distribution of students' favorite subjects, the size of each sector directly corresponds to the percentage of students choosing that subject.



Reasoning: Pie charts visually represent the proportion of different categories in a whole. Each sector's size is determined by the percentage it represents, providing an effective way to visualize the distribution of data.

- a. Both the assertion and reasoning are true, and the reasoning is a valid explanation of the assertion.
- b. Both the assertion and reasoning are true, but the reasoning is not a valid explanation of the assertion.
- c. The assertion is true, but the reasoning is false.
- d. Both the assertion and reasoning are false.

Q6. What will be the perimeter of a rectangle whose length is 10 m and breadth is 15 m?

Q7. Find the perimeter of a triangular plot of land whose sides are 2 m, 3 m 60 cm and 2 m 20 cm long.

Q8. The number of sets won by a player in 25 tennis matches is given as follows.

2,4,4,4,1,0,0,3,5,1,2,6,4,2,0,5,4,5,6,4,5,3,2,3,1

Prepare the frequency distribution table for the given data.



Q9. Salaries of nine employees of a company are given below.

`8000, `10000, `10000, `8000, `50000, `8000, `9000, `5000, `9000

Find the mean, median and mode for the above data.

Section C

(16 marks)

Q10. What will be the perimeter of an equilateral triangle of side 12.5 cm?

OR

The area of a parallelogram is 225 m^2 . It has a base of 15 m. Find the height of the parallelogram.



Physics

Max. Marks: 15

Q1. Long answer type questions. (80-100 words)

(2x2=4)

1. Explain the process of sound production and how it travels through different mediums. Provide examples to illustrate your points.

2. Describe the working principle of an electric circuit. Include the role of conductors and insulators in the flow of electric current.

Q2. Short answer type questions. (30-50 words)

(2x1.5=3)

1. Define pitch and amplitude in the context of sound.



2. State Ohm's Law and explain its significance in understanding electrical circuits.

Q3. Very short answer type questions.

(2x1=2)

1. What is the unit of frequency?

2. Name one natural and one artificial source of magnetism.

Q4. Multiple choice questions.

(0.50x4=2)

1. Which of the following materials is a good conductor of electricity?

- a. Wood
- b. Rubber
- c. Copper
- d. Glass

2. What type of wave is sound?

- a. Transverse
- b. Longitudinal
- c. Electromagnetic
- d. Stationary

3. In an electric circuit, what is the purpose of a resistor?

- a. Store energy
- b. Increase voltage
- c. Limit current
- d. Generate heat

4. What is the SI unit of magnetic field strength?

- a. Ampere
- b. Tesla
- c. Volt
- d. Ohm



Q5. Fill ups.

(0.5x4=2)

1. The SI unit of electric current is _____.
2. Sound cannot travel through a vacuum because it requires a _____ to propagate.
3. The phenomenon where a material becomes magnetized when placed in a magnetic field is called _____.
4. The unit of resistance is _____.

Q6. True or False.

(0.25x4=1)

1. Magnetic poles that repel each other have the same polarity. (True/False)
2. Electric current is the flow of electrons in a circuit. (True/False)
3. The speed of sound is higher in solids than in gases. (True/False)
4. A magnetic field exists around a stationary charged particle. (True/False)

Q7. Assertion and Reasoning type questions.

(1x1=1)

Directions: In the following questions, a statement of Assertion (A) is followed by a statement of Reason (R). Mark the correct choice as:

- A. Both Assertion (A) and Reason (R) are true and reason (R) is the correct explanation of assertion (A).
- B. Both Assertion (A) and Reason (R) are true but reason (R) is not the correct explanation of assertion (A).
- C. Assertion (A) is true but Reason (R) is false.
- D. Assertion (A) is false but Reason (R) is true.

Assertion: Sound is a form of energy transmitted through a medium, such as air.

Reasoning: Vibrating objects create pressure waves in the medium, which our ears perceive as sound.



Chemistry

Max. Marks: 10

Q1. Long answer type questions. (50-100 words)

(2x2=4)

1. Mention any six physical characteristics of metals.

2. Define the following terms

- a. Acid
- b. Base
- c. Salt

Q2. Short answer type questions. (30-50 words)

(2x1.5=3)

1. Name five non-metals which are gaseous at ordinary temperature?



What is a neutralization reaction?

Q3. Fill in the blanks.

(4x0.25=1)

1. All are good conductors of heat and electricity.
2. Lead is for humans.
3. An acid reacts with a carbonate to givegas.
4.bases are called alkalis.

Q4. Write true or false for the following statements.

(4x0.25=1)

1. Graphite is a form of carbon.
2. Stainless steel is an alloy.
3. Acids taste sour.
4. Ph of a base is higher than 7.

Q5. Assertion and reasoning type questions.

(1x1=1)

Directions: In the following questions, a statement of Assertion (A) is followed by a statement of Reason (R). Mark the correct choice as:

- A. Both Assertion (A) and Reason (R) are true and reason (R) is the correct explanation of assertion (A).
- B. Both Assertion (A) and Reason (R) are true but reason (R) is not the correct explanation of assertion (A).
- C. Assertion (A) is true but Reason (R) is false.
- D. Assertion (A) is false but Reason (R) is true.

Assertion: Acids can corrode certain metals.

Reasoning: Acids react with metals, producing salts and hydrogen gas.



Biology

Max. Marks: 15

Q1. Multiple choice questions.

(0.5x4=2)

- a. Which of the following is a common symptom of an allergic reaction?
 - i. Fever
 - ii. Sneezing
 - iii. Muscle pain
 - iv. All of the above
- b. What is an allergen?
 - i. A medication
 - ii. A substance that triggers an allergic reaction
 - iii. A type of immune cell
 - iv. An antibiotic
- c. The cerebellum controls
 - i. Movement and posture
 - ii. The sense organs
 - iii. Involuntary actions
 - iv. Thought and learning
- d. The neurons that carry impulses from the body to the brain are called.
 - i. Sensory neurons
 - ii. Sense organs
 - iii. Motor neurons
 - iv. Effector organs

Q2. State the answer True or False.

(0.5x4=2)

1. Allergies are always inherited and cannot be acquired later in life. _____
2. Anaphylaxis is a mild allergic reaction that does not require immediate medical attention. _____



3. Nerves are made up of bundles of axons.
4. The cerebellum helps us learn new movements.

Q3. Give one word answer. (From between the lines)

(1 mark)

1. What are the two functions of cerebrum?
2. Name three allergens?

Q4. Match the following:

(0.5×4=2)

- | | |
|------------------------|---------------------------------------|
| a. Dendron | Message encoded as electrical signals |
| b. Impulses. | Distributes nutrients to the brain |
| c. Bundle of axons. | Has many branches |
| d. Cerebrospinal fluid | Nerve |

Q5. Assertive reasoning:

(1 mark)

Direction for the question, in each question given below there are two statements marked A for assertions and R for reason mark your as per code.

Assertion: In man, only peripheral nervous system is present.

Reason: The peripheral nervous system includes nerves coursing between the central nervous system and different parts of the body.

- A) If both the assertion and the reason are true and the reason is the correct explanation of the assertion.
- B) If both the assertion and the reason are true and the reason is not the correct explanation of the assertion.
- C) If the assertion is true and the reason is false.
- D) If both the assertion and the reason is false.
- E) If the assertion is false but the reason is true.

Q6. Answer the following questions in 30-40 words.

(3×1=3)

1. What are neurons? What is the difference between Myelinated and Unmyelinated neurons?

2. State types of allergy and define them.



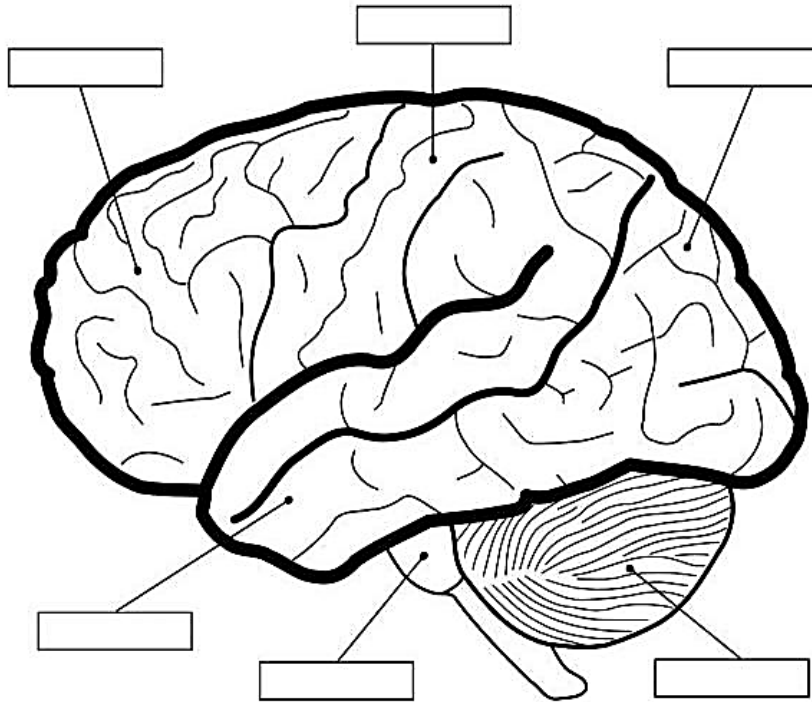
3. What is the difference between sensory and motor neurons?

Q7. Answer the following questions in 80-100 words.

(4 marks)

1. Label the diagram and describe the functions of the three parts of the brain.

Label the different parts of the brain on the diagram.



PARTS OF THE BRAIN

frontal lobe

cerebellum

temporal lobe

parietal lobe

brain stem

occipital lobe

OR

What is the Difference between the peripheral Nervous system and Central nervous system?





History and Civics

Max. Marks: 20

Q1. Choose the correct option.

(1x5=5)

1. The word Sufi is derived from “SUF” which means:
 - a. A Religious leader
 - b. Wool
 - c. Khanka
 - d. Peer
2. Sheikh Bahauddin zakariya founded which order:
 - a. Suhrawardi
 - b. Chasti
 - c. information not sufficient
 - d. Both i & ii
3. The turks introduced the rabab and the sarangi in India. _____
 - a. True
 - b. False
4. The right to freedom is absolute. _____
 - a. True
 - b. False
5. Which of the following is a Fundamental Right?
 - a. Right to equality
 - b. Right to Freedom
 - c. Right against Exploitation
 - d. All of the above

Q2. Fill in the blanks.

(1x5=5)

1. The Sufis developed a style of singing called _____.
2. _____ and _____ were popular Marathi saints.
3. The Directive Principles of State Policy are guidelines for the _____.
4. Some Directive Principles are based on the ideals of _____.
5. The Turks made _____ the official language of the Delhi Sultanate.

Q3. Match the following:

(0.5x3=1.5)

- | | |
|--|--|
| 1. Fundamental rights | Part iv Article 36 to 51 |
| 2. Hagiographies | Part III Article 12 to 35 |
| 3. Directive principle of state policy | Biographical hymns in praise of saints |



Q4. Assertion Reasoning.

(1x1=1)

Assertion (A): Alvars and Nayanars both preached devotion to a personal GOD.

Reason (R): Bhakti movement mentioned in ancient texts regarding devotion to personal GOD.

1. Both the assertion and reasoning are true, and the reasoning is a valid explanation of the assertion.
2. Both the assertion and reasoning are true, but the reasoning is not a valid explanation of the assertion.
3. The assertion is true, but the reasoning is false.
4. Both the assertion and reasoning are false.

Q5. Give short answers.

(1x2=2)

1. Give an example of a directive principle that has been given effect through a law?

2. Name any two works of devotional literature composed by bhakti saints of North India.

Q6. Give reasons for following: (20 to 30 words)

(1.5x2=3)

3. How did the Urdu language develop?

4. Write about the language used in Kabir's verses?



Geography

Max. Marks: 20

Q1. Choose the correct option.

(0.5×4=2)

- a. What kind of power is generated from running water?
 - i. Hydel
 - ii. Thermal
 - iii. Solar
- b. Olives and Citrus fruits are produced mainly by
 - i. Russia
 - ii. The Mediterranean countries
 - iii. Eastern Europe
- c. Which of the following is not a lake?
 - i. Geneva
 - ii. Zurich
 - iii. Matterhorn
- d. Among the following renewable sources of energy which one is the most polluting?
 - i. Wood
 - ii. Wind
 - iii. Sunlight

Q2. Fill in the blanks.

(0.5×4=2)

- a. Atomic power is another name for _____ power.
- b. In India, _____ is widely used as a fuel for lighting lamps.
- c. The largest city of Switzerland is _____.
- d. The single land mass comprising Asia and Europe is called _____.

Q3. Give one-word answer. (From in between the lines)

(0.5×4=2)

- a. A device that converts solar energy into electricity.

- b. A synthetic fibre has probably got its name from New York and London, the two cities where it was first produced.

- c. Mt. Blanc is the highest peak of _____ mountain range in Europe.



d. _____ lake is shared by France and Switzerland.

Q4. Match the following.

(0.5×4=2)

- | | |
|-----------------------|------------|
| 1. Hirakud dam | Tamil Nadu |
| 2. Nangal dam. | Rajasthan |
| 3. Sardar Sarovar dam | Punjab |
| 4. Mettur dam | Odisha |

Q5. Direction for the question, in each question given below there are two statements marked A for assertions and R for reason mark your answer as per the options given.

(1 mark)

- Both A and R are true and R explains A.
- Both A and R are true and R does not explain A.
- A is true and R is false.
- Both A and R are false.

Statement (A): The North European Plain is a crucial geographic feature in Europe.

Reason (R): Its fertile soils, navigable rivers, and flat terrain have facilitated agriculture, trade, and urbanization in the region.

Q6. Answer the following question in 20-30 words.

(2×1=2)

- Mention one advantage of wind power.

- Name two substances from which atomic Power is generated.

Q7. Give reasons for the following in 30 words.

(2×2=4)

- The Ural Mountains and the north-western highlands of Europe are not very high or steep.



b. Europe's rivers are important for transportation.

Q8. Answer below mentioned questions in 80-100 words. (3.5×1=3.5)

Name the four major physical units of Europe. Describe the location and physical features of central lowlands.

OR

Why should we conserve energy resources? Mention some ways of doing so.

Q9. Given below is an outline map of India, mark the rivers on which following dams have been constructed. (1.5×1=1.5)

1. Pong Dam
2. Koyna Dam



3. Krishnaraja Sagar Dam





Information Technology

Max. Marks: 40

Q1. Long answer type questions. (Do any three)

(5x3=15)

1. What is difference between `<HR>` and `
` tag?

2. What are the advantages of Video conferencing?

3. What is the purpose of `bgcolor` and `text` attributes of the `<BODY>` tag?

4. What is use of `` tag in HTML?



5. Explain how to attach files to emails.

Q2. Short answer type questions.

(3x3=9)

1. What is search engine?

2. What is cloud computing?

3. What are the different heading levels used in HTML?

Q3. Multiple choice questions.

(6x1=6)

1. What does the abbreviation HTML stand for?

- a. Hypertext Markup Language
- b. Hightext Markup Language
- c. Hypertext Markdown Language
- d. None of these

2. How many sizes of headers are available in HTML by default?

- a. 5



- b. 1
 - c. 3
 - d. 6
3. Which is the smallest header in HTML by default?
- a. H1
 - b. H2
 - c. H4
 - d. H6
4. HTML files are saved by default with the extension?
- a. .html
 - b. .hm
 - c. .ht
 - d. None of these
5. We enclose HTML tags within?
- a. []
 - b. {}
 - c. <>
 - d. ()
6. What is the effect of the tag?
- a. It converts the text within it to bold font.
 - b. It is used to write black-colored font.
 - c. It is used to change the font size.
 - d. None of the above.

Q4. Fill in the blanks.

(6x1=6)

- 1. _____ is a worldwide network of computers.
- 2. The attribute of the tag that is used to change the font type is _____.
- 3. Bing and Google are examples of _____.
- 4. An unwanted email sent to numerous people is called _____ mail.
- 5. The _____ tag breaks the text and shifts it to the next line.
- 6. The tag used to italicise a given text is _____.

Q5. Consider the following HTML code. Describe the manner in which the text would be displayed in the browser window.

(4x1=4)

```
<HTML>  
<HEAD>  
<TITLE>  
</TITLE>
```



</HEAD>

<BODY>

<H1> Dubai Grand International School </H1>

<P>DGIS provide unparalleled commitment towards best-in class modern education, our mission is to develop <I>your child's inherent potential</I> and help them grow into successful global citizens. Join us as we take you through our journey of creating amazing <U>individuals of tomorrow</U> and being a part of your child's future! <P>

</BODY>

<HTML>

سوالات:

(ا) یہ اشعار کس نظم سے منتخب کیے گئے ہیں؟

روٹی نامہ بنجارہ نامہ آدمی نامہ

(ب) نظم میں کس کے مکمل احوال بیان کیے گئے ہیں؟

آدمی جانور پرندے

(ج) لفظ "خطبہ خواں" کا معنی۔۔۔۔۔۔۔۔۔۔ ہے؟

لکھنے والا خطبہ پڑھنے والا قاری

(د) نظم میں آدمی کی جو تیاں چرانے کا الزام کس کے سر لگایا گیا ہے؟

جن آدمی فرشتہ

(ه) نظم "آدمی نامہ" کس شاعر کی تخلیق ہے؟

اقبال غالب نظیر اکبر آبادی

پارٹ (ب)

۶

سوال ۳ : درج ذیل اقتباس کو پڑھ کر دیے گئے سوالات کا مناسب جواب تحریر کیجیے۔

کشمیر کے زیادہ تر باغات مغل بادشاہوں نے بنوائے ہیں۔ مغلوں کا ذوقِ جمال مشہور ہے۔ باغوں کا شوق وہ ترکستان اور ایران سے اپنے ساتھ لایے تھے۔ شالیمار باغ کی بنیاد بادشاہ جہانگیر نے ۱۶۱۹ میں ڈالی۔ چشمہ شاہی بھی شاہجہاں کے دور میں مغل گورنر علی مردان خان نے ۱۶۲۳ میں بنوایا۔"

(ا) : یہ اقتباس کس سبق سے اخذ کیا گیا؟

ج:

(ب) : کشمیر کے زیادہ تر باغات کن بادشاہوں نے بنوائے؟

ج:

(ج) : مغلوں کی کون سی چیز زیادہ تر مقبول ہے؟

ج:

(د) : مغل بادشاہ باغوں کا شوق کن ممالک سے اپنے ساتھ لایے تھے؟

ج:

(ہ) : شالیمار باغ کی بنیاد کس بادشاہ نے ڈالی تھی؟

ج:

(و) : چشمہ شاہی کی بنیاد کب اور کس نے ڈالی تھی؟

ج:

سوال ۴ : اسم صفت کی کتنی قسمیں ہیں؟ صرف دو کی وضاحت کیجیے۔

۴

ج:

سوال ۵ : درج ذیل سوالات کا مناسب جواب تحریر کیجیے۔

۴

(۱) : عام ممالک جنگ سے خوف زدہ کیوں ہے؟

ج:

(ب) : کشمیر کے مغل باغات کی دلکشی کا راز کیا ہے؟

ج:

(ج) : سب سے پہلے اولمپک کھیل کہاں کھیلے گئے؟

ج:

جماعتہ: ستم

ماڈل ٹیسٹ پیپر (ایس۔ اے۔ ٹو)

پرچہ: کاٹھر

سوال نمبر (۱)۔ دینے آمڑ سطر پڑ و غور سان تہ اُخرس پٹھ پڑ زھنہ امتن سوالن دیو جواب۔
۵ کنگ یہ حصہ چھ اڈجہ منز اکھ لوکٹ موکٹ ناہموارد و باہ ہیو۔ یس نیبر مہ کنہ کہ پردے ستر بیون نیران چھ۔ اتھ
پٹھ چھ اکھ لعاب دار پردے اتھ چھ ہوا برتھ آسان۔ اتی پٹھ چھے کاڈس ستر ہنگہ اڈج لگتھ آسان۔ ہر گاہ کنس
پاکہ بیتز گتھ، سہ چھ ہر بان کاڈس تکلیف و اتناوتھ۔ اندر کن بنمہ اند چھس اکھ تنگ نالو آسان۔ یہ نالو چھے
ہٹس منز و سان۔ امہ کہ مددے ستر چھ منز کن نیبر مس ہو ہس ستر میلتھ۔ کنہ پردس پٹھ چھ اندر نیبر ہو ہگ دبا و ہیو
روزان۔ سخ شور و زبیلہ ہو ہگ دبا و چھ بڈان۔ منز کنگ ہر بمانہ ہوا چھ امی نالہ کنی ہٹس منز و اتان تہ کنہ پردے چھ
پھٹنہ نشہ بچان۔ امی نالہ کنی چھ ہٹیک ورم یا کنہ پچ لاگ کنس منز و اتان۔

(۱)۔ ہنگہ اڈج کتھ ستر چھے لگتھ آسان ؟

(ج):

(۲)۔ کتھ پردس چھ ہوا برتھ آسان ؟

(ج):

(۳)۔ کہ ستر چھ کاڈس تکلیف ہر بان و اتھ ؟

(ج):

(۴)۔ کنس اندر ری کنی کتھ نالو چھے آسان ؟

(ج):

(۵) کچھ ناکو کتھ منز چھے وسان ؟

(ج):

۱۲

سوال نمبر (۲)۔ دینہ آمتو سوالو منز دیو ژورن سوالن ہنڈ جواب۔

(۱)۔ کنہ گوگوارچ کام کیا چھے ؟

(ج):

(۲)۔ بونہ پن کتھ چھ لگان ؟

(ج):

(۳)۔ ماحول کتھ پاٹھری چھ ڈنجر روزان ؟

(ج):

(۴)۔ برار کیا زہ آس مشید منز کھوت موت کرتھ بہتھ ؟

(ج):

(۵)۔ خوجن کیا ز دیوت نہ ہمسالیس گر ؟

(ج):

سوال نمبر ۳)۔ لفظن ہند معنی لیکھو :-

۲ ماحول :۔۔۔۔۔ کھوت موت :۔۔۔۔۔ ہنر :۔۔۔۔۔ گونزھل :۔۔۔۔۔

۴ س ۴)۔ خالی جاییہ برو دینہ آمتہ لفظو ستر -

۱)۔ بر اُچھے کران۔۔۔۔۔

۲)۔ گکل چھے کران۔۔۔۔۔

۳)۔ ہا رچھے کران۔۔۔۔۔

۴)۔ مچھ چھے کران۔۔۔۔۔

(میاوں میاوں ، گلوگو ، چروچرو ، تن تن)

۴ سوال نمبر ۴)۔ دینہ آمتہ شکل نظر تل تھاوتھ کر و جملہ مکمل :



۔۔۔۔۔ چھ باڈو دارتہ و ستوار۔۔۔۔۔

۔۔۔۔۔ امہ چہ۔۔۔۔۔ چھے دوردورتام آسان۔ و انس ہنس ستر ستر چھ امہ کس گوڈس۔۔۔۔۔ پاد سپدان۔

۔۔۔۔۔ ہنر۔۔۔۔۔ چھے نقاشی باپتھ رژیوان مانہ۔ کشیر ہند شناختگ اکھ صہ چھے۔۔۔۔۔

۔۔۔۔۔ تہ باقی۔۔۔۔۔ ژٹنگ مطلب گو و سزارتہ شہیجار موکلاؤن۔

۲ سوال نمبر ۵)۔ و ا حدناوتن لیکھو جمع ناوتی -

یونی :۔۔۔۔۔ ، کور :۔۔۔۔۔ ، شمر :۔۔۔۔۔ ، ہون :۔۔۔۔۔

۲ سوال نمبر ۶)۔ یمن متعلق لیکھو تڑے جملہ :

مومہ غودود ”یا“ کنہ گوگہ دور

(ج):

۴

سوال نمبر ۷)۔ ڈکھ کراؤت کیاہ گووتہ اچہ ز مثالہ لیکھو۔

(ج):

۵

س ۷)۔ یونہ کنہ دینہ آمتہ عنوانو منہ لیکھو ا کس عنوانس تحت ۱۰۰ پٹھ ۱۵۰ لفظن پٹھ مشتمل اکھ مضمون۔

(۱)۔ یونی (۲)۔ گن

(ج):



مدرسة دُبائی جريند الدولية بسرینغر الكشمير

الاختبار الميقات الثاني الارقام: ٣٠

الصّف: السّابع الوقت: السّاعتان

المادّة: اللغة العربية والدراسات الاسلامية

دروس الاسلام

سوال نمبر ۱۔ درجہ ذیل اقتباس کو پڑھ کر سوالات کا جواب دیجیے:

(۵)

۱۔ امام نور شاہ کشمیری سرزمین کشمیر کی بہت بڑے فقیہ محدث ادیب معلم مصنف محقق اور عابد و زاہد عالم دین تھے۔ آپ

۱۸۷۰ھ کہ اس پاس لولاب کشمیر میں پیدا ہوئے۔ ابتدائی تعلیم اپنے والد مولانا معظم شاہ مسعودی سے حاصل کی۔

۲۔ اللہ تعالیٰ کو وہ شخص زیادہ پسند ہے جس کے اخلاق اچھے ہو۔ جس کے اخلاق کی وجہ سے لوگ اطراف سے اُس کے پاس

آئیں اور اُس سے اُلفت کریں اور وہ اُن سے اُلفت کرے اور اللہ تعالیٰ کو وہ شخص نہایت ہی ناپسند ہیں جو چغل خور ہو اور

بھائیوں میں تفرقہ اندازی کریں اور لوگوں کی عیب جوئی کی کوشش کریں۔

۱۔ امام نور شاہ کشمیری کون تھے؟

۲۔ آپ کہاں پیدا ہوئے؟

۳۔ آپ کے والد کا نام کیا تھا؟

۴۔ اللہ تعالیٰ کو سب سے زیادہ پسند انسان کون ہے؟

۵۔ اللہ تعالیٰ کو سب سے زیادہ ناپسند انسان کون ہے؟

(۵)

سوال نمبر ۲۔ دئے گئے سوالات کے جواب لکھئے:-

۱۔ غیبت کس بُرے کام سے بھی بدتر ہے اور کیوں؟

۲۔ اللہ تعالیٰ کو جو شخص سب سے زیادہ پسند ہے اُس کی چند صفات بیان کیجئے؟

۳۔ حضرت تھانوی نے شاہ صاحب کے بارے میں کیا فرمایا؟

۴۔ اسلامی واقعہ سے ہمیں کیا سبق ملتا ہے؟

۵۔ رسول اللہ صلی اللہ علیہ وسلم نے سب سے زیادہ شہیر کس کو فرمایا؟

(۳)

سوال نمبر ۳۔ صحیح جملوں کے اگے (✓) اور غلط جملوں کے اگے ک (x) لکھئے ہے

- ۱۔ دینی علوم سے فراغت کے بعد شاہ صاحب نے مدرسہ امینیہ میں پڑھایا۔ ()
- ۲۔ شاہ صاحب نے اپنے وطن کشمیر میں فیض الخاص کے نام سے مدرسہ جاری کیا۔ ()
- ۳۔ شیخ الہند کے سفر حج پر جانے کے بعد ترمذی کا درس شاہ صاحب کے ذمہ ڈالا گیا۔ ()

۴۔ شیخ الہند مولانا محمد الحسن شاہ صاحب کے استاد تھے۔ ()

سوال نمبر ۴۔ صحیح جواب چُن لیجئے :- (۳)

۱۔ کس بادشاہ کی وفات سے چار سال پہلے امام دہلوی پیدا ہوئے۔

(۱) اکبر بادشاہ (۲) شاہجہاں بادشاہ (۳) اورنگ زیب بادشاہ۔

۲۔ ان میں سے کون سی کتاب امام دہلوی نے لکھی؟

(۱) حُجَّة اللہ البالغہ (۲) حُجَّة العاقلہ (۳) حُجَّة اللہ النافعہ۔

۳۔ امام شاہ ولی اللہ گیارہویں صدی کے کیا تھے۔

(۱) مرشد (۲) مجدد (۳) مُصلِح

۴۔ امام شاہ ولی اللہ کس سن میں حج سے واپس آگئے۔

(۱) 1734ء (۲) 1733 (۳) 1735ء

۵۔ امام دہلوی جس قبرستان میں دفن ہوئے اُس کا نام تھا۔

(۱) چندیان (۲) گلستان (۳) مہندیان

سوال نمبر ۵۔ "الف" کو "ب" سے ملائے :- (۴)

۱۔ امام بخاری و امام مسلم کو حضرت عمر بن عبدالعزیز نے کروائی۔

۲۔ اصحاب سُنن سے مراد اُسے "صحیح" کہتے ہیں۔

۳۔ حدیث کی سب سے پہلے تدوین امام ترمذی، امام ابو داؤد، امام نسائی اور ابن ماجہ ہیں۔

۴۔ جس کتاب میں صرف صحیح حدیث ہو رسول اللہ صلی اللہ علیہ وسلم کا طرز عمل۔

۵۔ سنت کا مطلب شیخین کہا جاتا ہے۔

الدروس العربية

السؤال الاول: اقر ا هذه العبارة واجب عن الاسئلة الآتية۔ (۱۰)

حامد طبيب، زوجته مدرسة، اسمها آمنة، حامد له اربعة ابناء هم۔ حمزة وعثمان احمد و ابراهيم، احمد و حمزة طالبان، احمد طالب مجتهد و حمزة طالب كسلان۔

۱۔ من هو طبيب؟

۲۔ ما اسم زوجته؟

۳۔ كم ابناء لحامد وما اسمهم؟

۴۔ من هو طالب كسلان؟

۵۔ من هو طالب مجتهد؟

السؤال الثاني:۔ ترجم العبارة بالغة الوردية (۵)

۱۔ ذهب ابي الى مكة وذهب عمي الى جدة۔

۲۔ هذا الكتاب لمحمد و ذلك لزينب۔

۳۔ اين ذهب ابوك يا ليلى؟ ذهب الى بغداد۔

٢- عندى خمسة مفاتيح -

٥- بيت خالد كبير وبيت أسامة صغير -

السؤال الثالث:- أكتب الاعداد من ٣ الى ١٠ واجعل كل من الكلمات الآتية معدوداتها -

(٥)

- | | |
|----------|------------|
| ١- مسجد | ٢- فُنْدُق |
| ٣- منديل | ٣- مفتاح |
| ٥- صديق | ٦- زميل |
| ٤- كرسي | ٨- مدرسة |
| ٩- دقيقة | ١٠- فندق |

